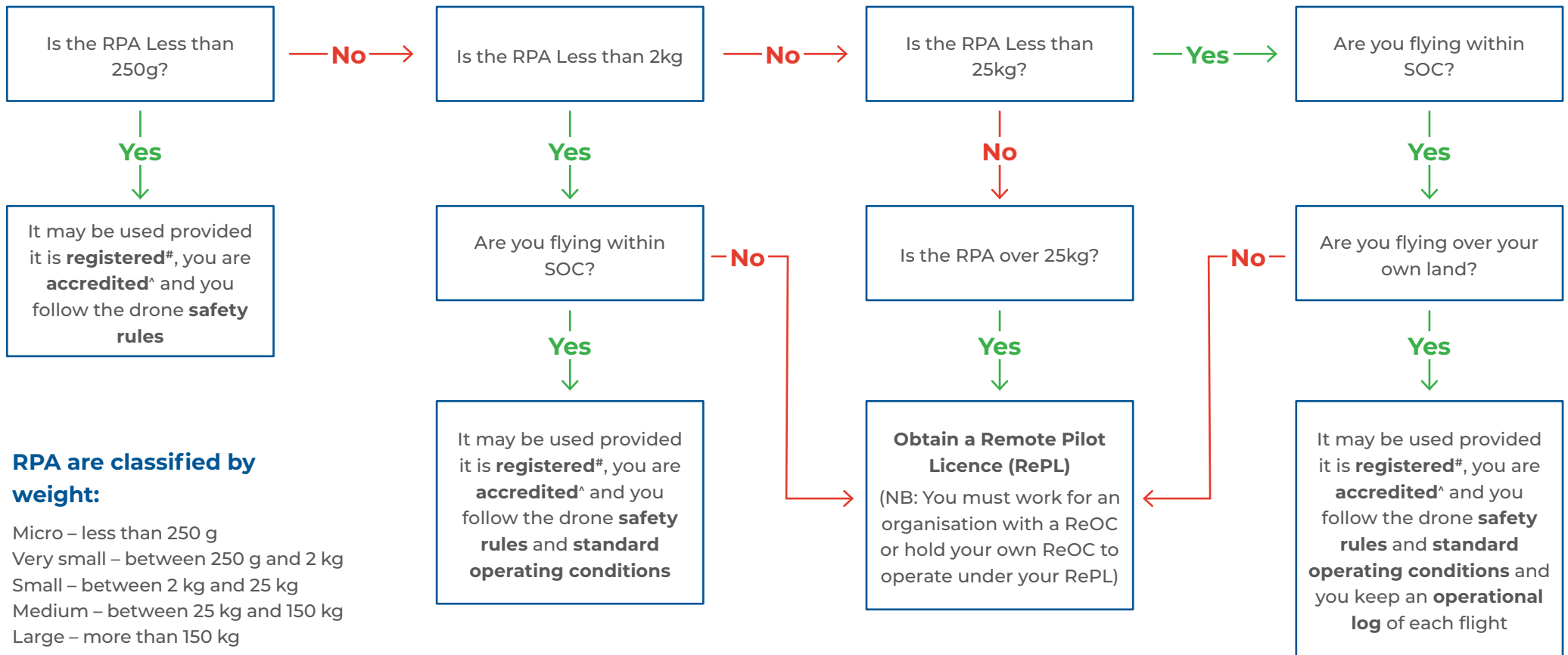


Can I operate in the excluded* category?

* Without RePL of ReOC



RPA are classified by weight:

- Micro – less than 250 g
- Very small – between 250 g and 2 kg
- Small – between 2 kg and 25 kg
- Medium – between 25 kg and 150 kg
- Large – more than 150 kg

#All RPAS used for business purposes **MUST BE REGISTERED** with CASA
 ^CASA accreditation **IS REQUIRED** if you do not hold Remote Pilots Licence (RePL)

This information is considered correct at the time of printing and is intended as a guide only. RPAS users should check with CASA for more information. See CASA Micro and excluded Remotely Piloted Aircraft operations (Plain English Guide). **Please note:** Even if you meet these CASA legal requirements you still need to conform with your agency requirements and conditions for operating RPAS.

Standard Operating Conditions

The RPA MUST BE operated

- by visual line of sight of the person operating the RPA; and
- at or below 400 ft (120m) AGL; and by day only

The RPA must NOT BE operated

- not operated within 30 m of a person who is not directly associated with the operation of the RPA; and
- over a populous area; and
- in a Prohibited area; or
- in a Restricted area (unless permission is obtained)
- within 3 NM (5.5 km) of the movement area of a controlled aerodrome;
- not operated over an area where a fire, police or other public safety or emergency operation is being conducted without the approval of a person in charge of the operation.

ONLY ONE RPA FLOWN PER PILOT AT ANY ONE TIME

When do I need a Remote Pilots Licence (RePL)?

- If I am flying any drone over 250 g that is operating outside of SOC
- If I am operating a drone over 25 kg over any land that I do not own

If you have a RePL, you must work for and organisation that has a ReOC or hold your own ReOC, if flying for purposes of business.

What is a RPA Operators Certificate (ReOC)

An ReOC is like the air operator's certificate (AOC) used for traditional manned aviation operations. The ReOC authorises the holder to conduct included RPA operations for commercial purposes. The types of RPA, and any specific conditions, are endorsed on this certificate and any "instruments" of approval provided by CASA.

The ReOC (RPA Operators Certificate) is the certification a business (including sole trader) or organisation requires. On the other hand, the RePL (Remote Pilot Licence) is what individual RPA pilots need to have to operate drones commercially while working for the ReOC holder.

What is and AROC and do I need one?

An AROC is an aeronautical radio operators certificate. It is the qualification aviation professionals need to make aeronautical radio calls. If an RePL holder does not have an AROC, they cannot fly within 3nm of the movement area of the controlled aerodrome, no matter the height of the RPA. You will also be restricted if you want to fly an RPA 2kg or heavier,, for commercial purposes at any height in controlled airspace (even if the rules normally allow you to fly below 400 feet in controlled airspace).